



Course Guide 2026

Crossing Language Barriers

CONTENTS

1

inlingua Malta

- 01** Welcome
- 03** Why Choose inlingua Malta
- 04** Be Inspired by Others

- 05** Spend the Day With Us
- 06** Facilities
- 07** Location

2

English Courses

- 09** General English
- 11** Junior English
- 12** Erasmus +
- 12** Bildungsurlaub
- 13** Business English

3

Group Programmes

- 14** What to Expect & How to Book With Us
- 15** Activities

4

Exam Preparation Courses

- 16** Cambridge Exam Dates and Prices
- 17** Exam Preparation Courses - IELTS and Cambridge

5

Additional Services

- 18** my.inlingua
- 19** Complementary services

6

Learning Services

- 20** Material and Services
- 21** Level Progression Chart

7

Accommodation

- 23** Accommodation Options

8

Take Note

- 25** Essential Information

9

Terms and Conditions

- 28** Terms and Conditions

Welcome to inlingua Malta

Dear Prospective Students and Partners,

As we welcome a new year, we are excited to share the journey of inlingua School of Languages Malta, where tradition, innovation, and passion for teaching come together. Founded by our father and grandfather, Maurice Portelli, a pioneer of English Language Teaching (ELT) in Malta, our school has grown from his vision into one of the island's most respected and established language institutions. His legacy continues to inspire us as we move confidently into the future.

In 2025, we proudly celebrated 45 years of operation in Malta—a milestone that reflects decades of dedication to delivering quality education and unforgettable experiences. Throughout this time, we have partnered with educational institutions and agencies worldwide, welcoming thousands of students who have enriched our vibrant and diverse learning community. For us, language learning has always been about more than lessons—it is about creating lifelong memories and opportunities.

Over the past year, we have invested heavily in digitisation, streamlining our processes to deliver greater efficiency, improved service, and reduced paperwork in line with our values of sustainability and environmental responsibility. At the same time, we are updating our learning methods and materials to ensure our students enjoy fresh, engaging, and modern experiences in the classroom. With the rapid rise of AI in education, we are preparing to blend the trusted inlingua methodology with new technologies that will shape the future of learning.

We are privileged to collaborate with so many dedicated professionals and partners across the globe. Their trust and support have helped us create an environment that combines academic excellence with warmth, care, and personal attention. Looking forward, we are eager to continue welcoming new students, expanding our partnerships, and strengthening our role as a leader in Malta's ELT industry.

Innovation, sustainability, and quality remain at the heart of everything we do. With 45 years of tradition behind us and exciting opportunities ahead, we are ready to embrace the future together with our students and partners.

Thank you for choosing inlingua Malta. We look forward to being part of your educational journey in the year ahead.

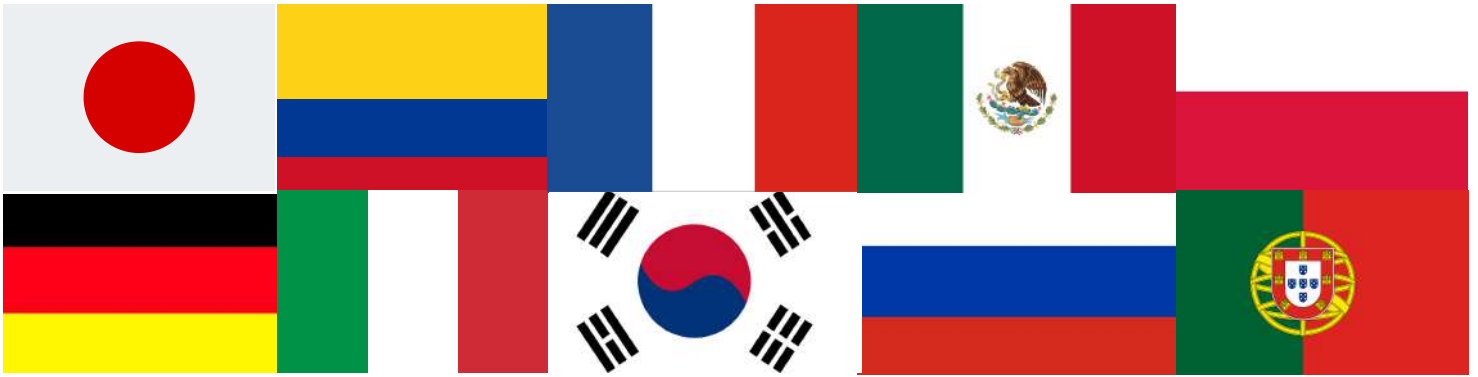
Maryse, Luisa and Pippa

Directors at inlingua School
of Languages Malta



Mix of Nationalities

In 2025 we had a total of 63 nationalities from all over the world



Location

inlingua Malta in Sliema is just 50 m from the seafront, near shopping complexes, high street stores, seafront restaurants and convenient bus stops.



Quality

Years of

Accredited by:



Why Choose inlingua Malta



Experience

since
1980



Excellence



More than

100,000

Students trusted us



“

My time here was eventful, with activities every day. Choosing inlingua was easy, since my father was here before and spoke positively about it. I would also recommend it, as the atmosphere is welcoming and you can see your progress in English.

”

Yannik - Germany



“

It was a refreshing experience: I improved my English and rediscovered enthusiasm and curiosity in an engaging international environment. I met three teachers, each confirming the quality of your methods. I hope to see you again soon.

”

Kaori - Japan



“

I chose Malta because of the weather, my city is way too cold. The beaches here are amazing and the water is so clear. Malta has a lot to offer for young people. I also really like inlingua's teaching style and all my teachers are very experienced.

”

Samuel - Colombia

**Be
inspired
by others**

Spend the day with us!

A typical first day at inlingua Malta.



Welcome to inlingua Malta!

New students receive their books and supplies from our school reception as they start their exciting journey of learning and discovery. Our team is ready to welcome you and assist you on your first day.



Class Time

Students enjoy learning English in class in a fun and engaging environment. They practise speaking, listening, reading and writing through the inlingua method, where communication is key to their success.



Orientation Meeting

On the first day, we guide students through everything they need to know whilst in Malta, from the visa process to transport tips and nearby tourist spots. We also discuss additional services available and community standards, like accommodation and airport transfers.



Tour in Valletta

On the first day, we welcome new students with a tour of Valletta, the capital city of Malta. This helps them immerse themselves in the island's rich history and inspires them to explore its beauty. Students can then follow our weekly activity plan.

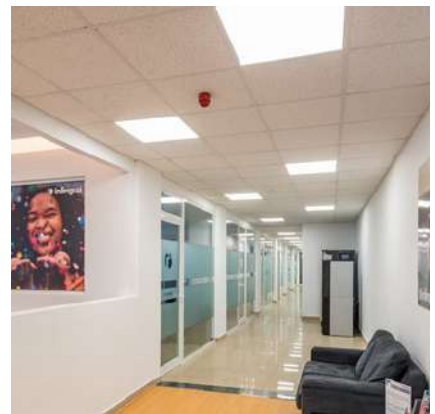


Meet New People at Our Social Activities

Make friends from around the world while learning and growing together in a fun and supportive environment! Evening and afternoon events and activities are available for all of you.

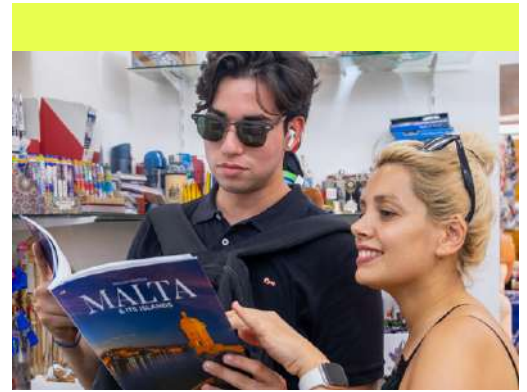
inlingua_malta





The best place to learn English on the island

We are in one of Malta's most popular areas, close to restaurants, shopping centres, shops, beaches, and relaxing spots. It's easy to get here by bus or public transport, and we are just 5 minutes by ferry from Valletta, the capital city of Malta.



General English

Learning in a Group

Our General English programme is designed to facilitate language acquisition and its practical application in students' daily routine. Our curriculum encourages the gradual improvement of language skills. While priority is given to oral proficiency to improve fluency, our course covers comprehensive aspects including English usage, reading, listening, writing and speaking.

This is the perfect choice if you want to combine an English language course with a relaxing fun holiday. The course teaches English for everyday life – conversation skills, grammar structures and vocabulary. You will learn to communicate effectively in English in many social situations.

Classes start every Monday

Monday to Friday

🕒 8:45 - 12:00 / 12:30 - 15:45

Available at the following CEFR Levels:



General

🕒 Hours Per Week

15

Beginner to Advanced level

- Hours Per Day 3
- Lessons Per Week 20
- Minutes Per Lesson 45
- Age 13+



Intensive

🕒 Hours Per Week

22.5

Beginner to Advanced level

- Hours Per Day 4.5
- Lessons Per Week 30
- Minutes Per Lesson 45
- Age 13+



Combined

🕒 Hours Per Week

22.5

Beginner to Advanced level

- Hours Per Day 4.5
- Lessons Per Week 30
Group 20 + 10 One-to-One
- Minutes Per Lesson 45
- Age 13+



| Long Stay Programme

This programme runs for a minimum of 8 weeks and is perfect for creating fluency in English to that of a native speaker. Student progress will be continually monitored throughout their stay. Long-stay programmes often lead to achieving internationally recognised qualifications.

| | General | | Intensive | | | |
|------------------|----------|-----------|-----------|-----------|-----------|-----------|
| 🕒 Hours Per Week | 15 | | 22.5 | | | |
| Weeks | 8 | 12 | 24 | 32 | 40 | 48 |

Available at the following CEFR Levels:      

| Mini Group | Intensive Mini Group | One to One |
|--|--|---|
| 🕒 Hours Per Week 15 | 🕒 Hours Per Week 22.5 | 🕒 Hours Per Week 15 |
| <p>Beginner to Advanced level</p> <ul style="list-style-type: none"> ■ Hours Per Day: 3 ■ Lessons Per Week: 20 ■ Minutes Per Lesson: 45 ■ Age: 13+ | <p>Beginner to Advanced level</p> <ul style="list-style-type: none"> ■ Hours Per Day: 4.5 ■ Lessons Per Week: 30 ■ Minutes Per Lesson: 45 ■ Age: 13+ | <p>Beginner to Advanced level</p> <ul style="list-style-type: none"> ■ Min. Hours per Day: 1.5 ■ Min. Lessons Per Week: 10 ■ Minutes Per Lesson: 45 ■ Age: 5+ |
|  |  |  |

Junior English

Learning in a Group

This course ingeniously combines education and fun. Taking advantage of inlingua's abundant resources and our qualified, experienced educators, our young learners engage in age-appropriate, interactive learning. This dynamic approach covers a wide range of skills, all taught through exciting games and activities. Children are encouraged to practise through participation, and the trainer creates a positive atmosphere where students feel confident and relaxed. This is truly an effective and entertaining way to learn English in Malta.

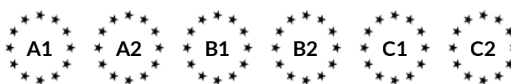
Delivered five days a week, from Monday to Friday, the course comprises a total of 20 lessons per week. Each lesson is thoughtfully designed to last 45 minutes, collectively totalling three hours of engaging instruction per day. Junior English classes are also available as combined group and one-to-one courses, or on a one-to-one basis.

Classes start every Monday

Monday to Friday

🕒 8:45 - 12:00

Available at the following CEFR Levels:



| Junior English | Combined | One to One |
|---|---|---|
| 🕒 Hours Per Week 15 | 🕒 Hours Per Week 22.5 | 🕒 Hours Per Week 15 |
| Beginner to Advanced level | Beginner to Advanced level | Beginner to Advanced level |
| ■ Hours Per Day 3 | ■ Hours Per Day 4.5 | ■ Min. Hours Per Day 1.5 |
| ■ Lessons Per Week 20 | ■ Lessons Per Week 30 Group 20 + 10 One-to-One | ■ Min. Lessons Per Week 10 |
| ■ Minutes Per Lesson 45 | ■ Minutes Per Lesson 45 | ■ Minutes Per Lesson 45 |
| ■ Age 5-12 | ■ Age 5-12 | ■ Age 5-12 |
|  |  |  |

Parent & Child Courses

Our Junior Courses offer tailored English lessons for children as young as 5 years old. To streamline the process for families, parents can conveniently book group courses of 20 lessons simultaneously with their kids. This setup ensures a smooth experience while providing both children and parents with English language education, fostering a supportive atmosphere where learning is shared.

| | |
|-------------------------------|----------------------------|
| General | Beginner to Advanced level |
| 🕒 Hours Per Week 15 | ■ Hours Per Day 3 |
| | ■ Lessons Per Week 20 |
| | ■ Minutes per Lesson 45 |
| | ■ Age 5-12 |

Classes start every Monday

Monday to Friday

🕒 8:45 - 12:00

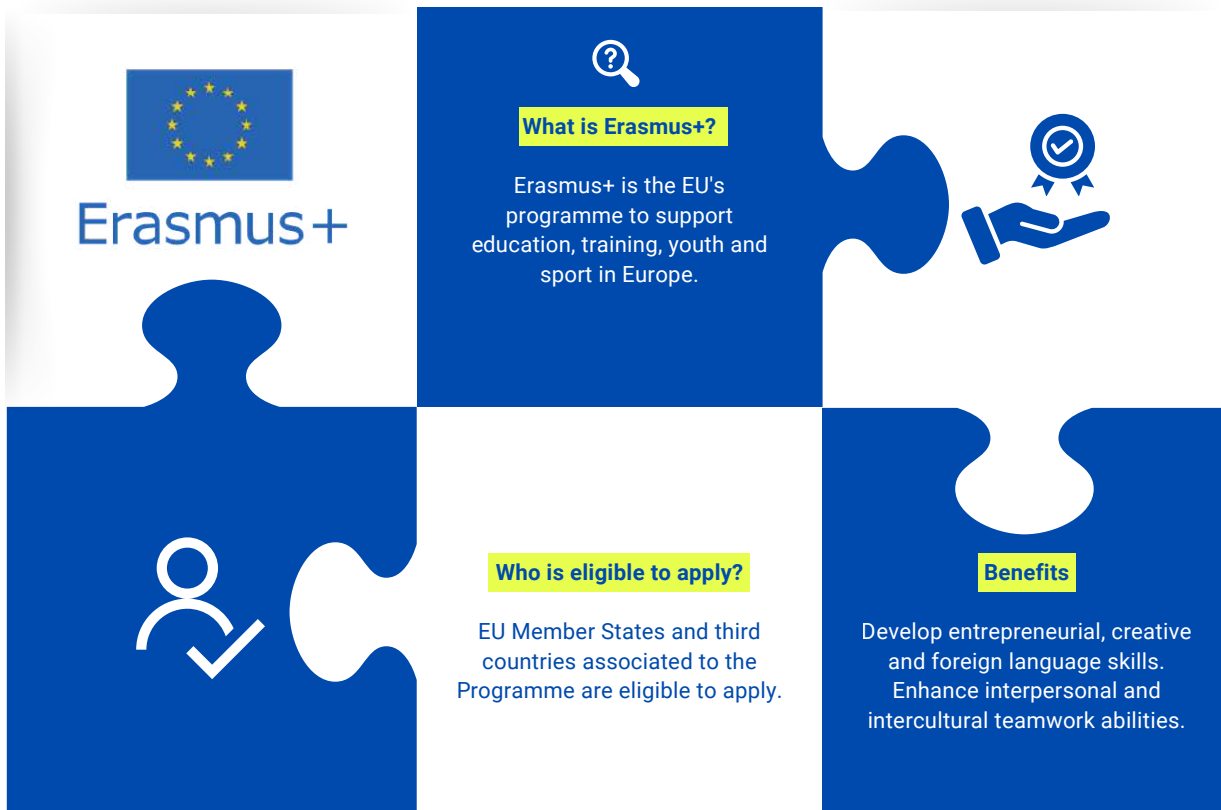
Available at the following CEFR Levels:



inlingua_malta



|Funded Educational Programmes



The Erasmus+ section is presented as a puzzle with four pieces. The top-left piece features the European Union flag and the text 'Erasmus+'. The top-right piece, titled 'What is Erasmus+?', describes the program as the EU's initiative for education, training, youth, and sport. The bottom-left piece, titled 'Who is eligible to apply?', lists EU Member States and associated third countries. The bottom-right piece, titled 'Benefits', lists the development of entrepreneurial, creative, and language skills, as well as enhanced interpersonal and intercultural teamwork abilities.

Erasmus+

What is Erasmus+?
Erasmus+ is the EU's programme to support education, training, youth and sport in Europe.

Who is eligible to apply?
EU Member States and third countries associated to the Programme are eligible to apply.

Benefits
Develop entrepreneurial, creative and foreign language skills.
Enhance interpersonal and intercultural teamwork abilities.

This scholarship can be awarded to students from both EU and non-EU countries. **Students should note that they may only apply to educational institutions approved and participating in the Erasmus+ Programme. inlingua Malta is one of them.**



The Bildungsurlaub section is presented as a puzzle with four pieces. The top-left piece features the 'BILDUNGSURLAUB' logo. The top-right piece, titled 'What is Bildungsurlaub?', defines it as a paid leave program for German employees for professional training. The bottom-left piece, titled 'Valid regions', lists 12 German states. The bottom-right piece, titled 'This programme is recognised by the German government, and it is valid in 12 German regions.', states that inlingua Malta's English courses are approved by Bildungsurlaub.

BILDUNGSURLAUB

What is Bildungsurlaub?
It is a paid leave programme for German employees to receive 5/10 days of professional training per year.

Valid regions
Berlin, Brandenburg, Bremen, Hamburg, Hessen, Mecklenburg-Vorpommern, Niedersachsen, Nordrhein-Westfalen, Rheinland-Pfalz, Saarland, Sachsen-Anhalt, Schleswig-Holstein.

This programme is recognised by the German government, and it is valid in 12 German regions.

inlingua Malta has English courses approved by Bildungsurlaub.

This programme enhances English proficiency, cultural awareness, global networking, career advancement and personal development, providing valuable professional and life experiences. **Students wishing to join this programme need to submit a request.**

Business English

Learning in a Group

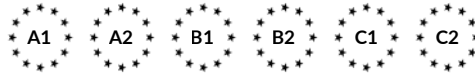
This English course will teach you how to communicate effectively in a business environment. The inlingua Business English course book covers topics and language commonly used in this field. We also have specially designed English books covering various areas of business, such as meetings, finance, presentations, negotiations, business correspondence, intercultural awareness, communication, human resources and more. Lessons are intense and focused, allowing you to learn quickly in this highly charged environment.




Classes start every Monday

Monday to Friday

🕒 8:45 - 12:00 / 12:30 - 15:45

Available at the following CEFR Levels:



| Business English | Business English Combined | Intensity Programme |
|---|---|--|
| 🕒 Hours Per Week 15 | 🕒 Hours Per Week 22.5 | 🕒 Hours Per Week 22.5 30 |
| ■ Hours Per Day 3 | ■ Hours Per Day 4.5 | ■ Hours Per Day 4.5 6 |
| ■ Lessons Per Week 20 | ■ Lessons Per Week 30 Group 20 + 10 One-to-One | ■ Lessons Per Week 30 40 |
| ■ Minutes Per Lesson 45 | ■ Minutes Per Lesson 45 | ■ Minutes Per Lesson 45 |
| ■ Age 18+ | ■ Age 18+ | ■ Age 18+ |
|  |  |  |

|What to Expect?

Our packages offer a comprehensive range of services, including the specific language option course, accommodation, meal plans, an inlingua course book, airport transfers, leader support, and enriching cultural visits.



Accommodation | Transport Services | Cultural, Educational or Leisure Activities | Leader Support | Learning Material | Meal Plans

|How to Book With Us?

01



Request a Quote
Please provide the number of students, their ages, the starting date of enrolment, and the services required.

02



Receive a booking confirmation and a detailed programme, including schedule, accommodation, meals, transport, and services.

03



Support throughout the entire stay
We provide assistance and guidance whenever needed.

SPECIAL RATES FOR GROUPS
SPECIAL RATES FOR GROUPS

SPECIAL RATE FOR GROUPS

SPECIAL RATE FOR GROUPS
SPECIAL RATE FOR GROUPS



Perfect Group Holiday & English Learning Experience!

Join us for an unforgettable group holiday combined with top-quality English learning. With 44+ years of experience, we offer comprehensive packages including transport, accommodation, meals, and engaging activities, all at exceptional prices.

Enjoy discounted rates, comfortable stays, delicious meals, and tailored learning programmes. Make your next holiday both fun and educational with us!

We prioritise affordability without sacrificing quality. Our goal is to find the ideal price point for each group, ensuring their needs and preferences are fully met. To show our appreciation for group coordinators, we offer complimentary services as a thank-you for choosing inlingua as their language learning destination.



GROUP PROGRAMMES

Cambridge Assessment Authorised Exam Centre

inlingua Malta is the only Cambridge Exam preparation and Exam Centre providing the comfort of studying and sitting for an FCE, CAE, CPE, or PET Exam in the same location. These exams assess your ability to communicate effectively in English in realistic situations and will provide you with the ideal preparation to use English in your professional and academic life.

Cambridge Exam Dates & Prices 2026

| Cambridge Paper-Based Exam | Exam Days | Entry Closing Dates | Exam Fee | Result Issue Window |
|--|--|---|----------|--|
| Preliminary English Test (B1) | Sat 7th Mar 2026 Tue 4th Jun 2026 Thu 3rd Dec 2026 | 29th Jan 2026 29th Apr 2026 29th Oct 2026 | €185 | 7th - 20th Apr 2026 2nd - 17th Jul 2026 8th - 21st Jan 2027 |
| First Certificate in English (B2) | Fri 13th Mar 2026 Tue 9th June 2026 Fri 28th Aug 2026 Sat 12th Dec 2026 | 5th Feb 2026 4th May 2026 23rd Jul 2026 5th Nov 2026 | €220 | 14th - 27th Apr 2026 7th - 20th Jul 2026 25th Sep - 8th Oct 2026 18th - 29th Jan 2027 |
| Certificate in Advanced English (C1) | Sat 14th Mar 2026 Sat 6th June 2026 Fri 28th Aug 2026 Sat 12th Dec 2026 | 5th Feb 2026 4th May 2026 23rd Jul 2026 5th Nov 2026 | €230 | 14th - 27th Apr 2026 7th - 20th Jul 2026 25th Sep - 8th Oct 2026 18th - 29th Jan 2027 |
| Certificate of Proficiency in English (C2) | Sat 7th Mar 2026 Sat 6th Jun 2026 Sat 12th Dec 2026 | 29th Jan 2026 4th May 2026 5th Nov 2026 | €235 | 7th - 20th Apr 2026 7th - 20th Jul 2026 18th - 29th Jan 2027 |



Exam Preparation Courses

Taking the Cambridge and IELTS exams provides a significant boost in both professional and social contexts. These certifications are globally recognised, opening doors to international job markets and higher education. They also enhance communication skills, enabling more confident interactions in diverse settings. Overall, the exams validate your English proficiency, helping to advance your career and enrich your social life.

IELTS Exam Preparation Course **IELTS™**

IELTS is an increasingly important test for English language learners who want to meet the entry requirements of UK and US universities. These universities require the qualification from designated SELT centres, such as Cambridge and IELTS. inlingua Malta's IELTS Preparation 30 Course aims to improve both General and Academic English skills and to enhance strategies for taking the IELTS exam.

Cambridge B2 First (FCE) Course

🕒 Hours Per Week
22.5

| | |
|---------------------|---|
| ■ Hours Per Day | 4.5 |
| ■ Recommended Age | 16+ |
| ■ Recommended Level | B2 |
| ■ Length | 4 weeks 8 weeks |
| ■ Start Dates | 16th Feb 2026 19th Jan 2026 11th May 2026 13th Apr 2026 16th Nov 2026 19th Oct 2026 |



Cambridge C1 Advanced (CAE) Course

🕒 Hours Per Week
22.5

| | |
|---------------------|---|
| ■ Hours Per Day | 4.5 |
| ■ Recommended Age | 16+ |
| ■ Recommended Level | C1 |
| ■ Length | 4 weeks 8 weeks |
| ■ Start Dates | 16th Feb 2026 19th Jan 2026 11th May 2026 13th Apr 2026 16th Nov 2026 16th Nov 2026 |



IELTS Group Course

🕒 Hours Per Week
22.5

| | |
|---------------------|-----------------|
| ■ Hours Per Day | 4.5 |
| ■ Recommended Age | 16+ |
| ■ Recommended Level | B2 |
| ■ Length | 1-2-3-4-8 Weeks |



Exam Preparation One-to-One 30 (IELTS, Cambridge, TOEFL)

🕒 Hours Per Week
22.5

| | |
|---------------------|----------|
| ■ Hours Per Day | 4.5 |
| ■ Recommended Age | 16+ |
| ■ Recommended Level | B1 - C1 |
| ■ Length | Flexible |



my.inlingua - inlingua Online Courses

my.inlingua – inlingua Online Learning Course – is a sophisticated, award-winning learning technology that combines the benefits of classroom and online learning, supporting you in your efforts to improve your language skills.

inlingua provides students with the option of blended learning, allowing them to combine traditional in-person classroom instructions with online coursework that complements the inlingua course material and language objectives for each proficiency level. This approach can be particularly advantageous for individuals seeking to pursue their studies conveniently from home.

Available at the following CEFR Levels:



General English

Access Duration

3 months
+
10 conversation lessons

Business English

Access Duration

3 months
+
10 conversation lessons



Tutor-led self-study and online conversation lessons



Self-study modules with 90 languages are tailored to your level of English.



Conversation lessons
50 minute duration



Choose the time and the topic

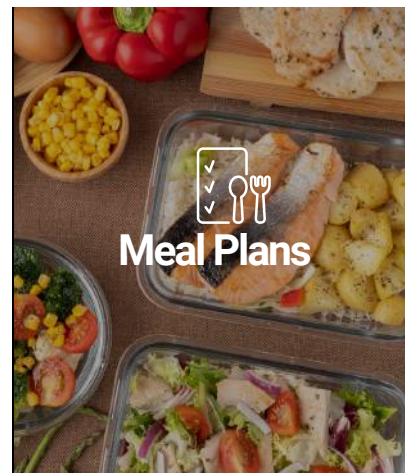
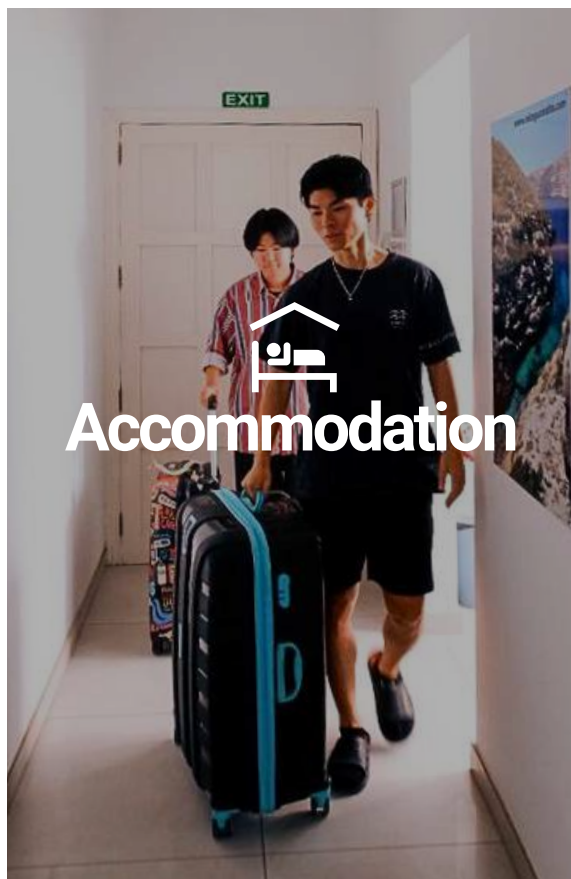
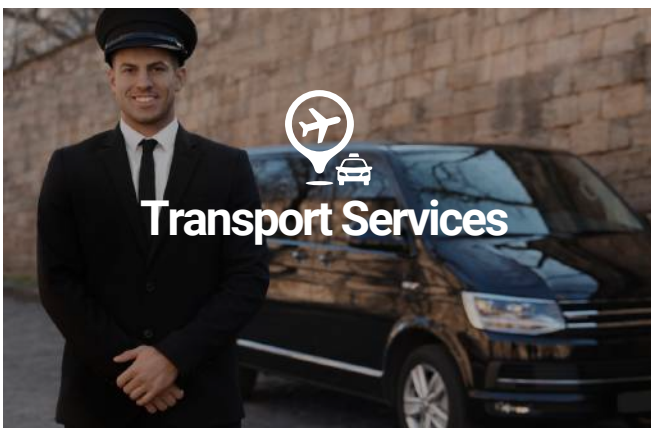


Ideal for improving speaking skills and fluency

No need to worry we've got you covered



Accommodation | Transport Services | Cultural, Educational or Leisure Activities | Leader Support | Learning Material | Meal Plans



ADDITIONAL SERVICES



Material & Services



Print

inlingua Course Books are designed as support material for language training sessions. They are adapted to suit the level, language structure, vocabulary and topic of the learner's choice.



Online Test

inlingua offers free online language placement testing. The test can be taken at any time online, and it is non-binding. If you wish, your results can be sent directly to your centre of choice.



my.inlingua Online Learning

my.inlingua provides the opportunity to choose a customised learning path which meets individual needs and enables learners to continue learning outside the classroom.



Audio

Each course book has audio exercises in the training session or for private practice. All audio files are available for download on the inlingua website.



Virtual Classroom

The virtual classroom enables learners to learn anywhere, at any time. Lessons take place online with a teacher and only require stable internet access and a computer with integrated audio and webcam.

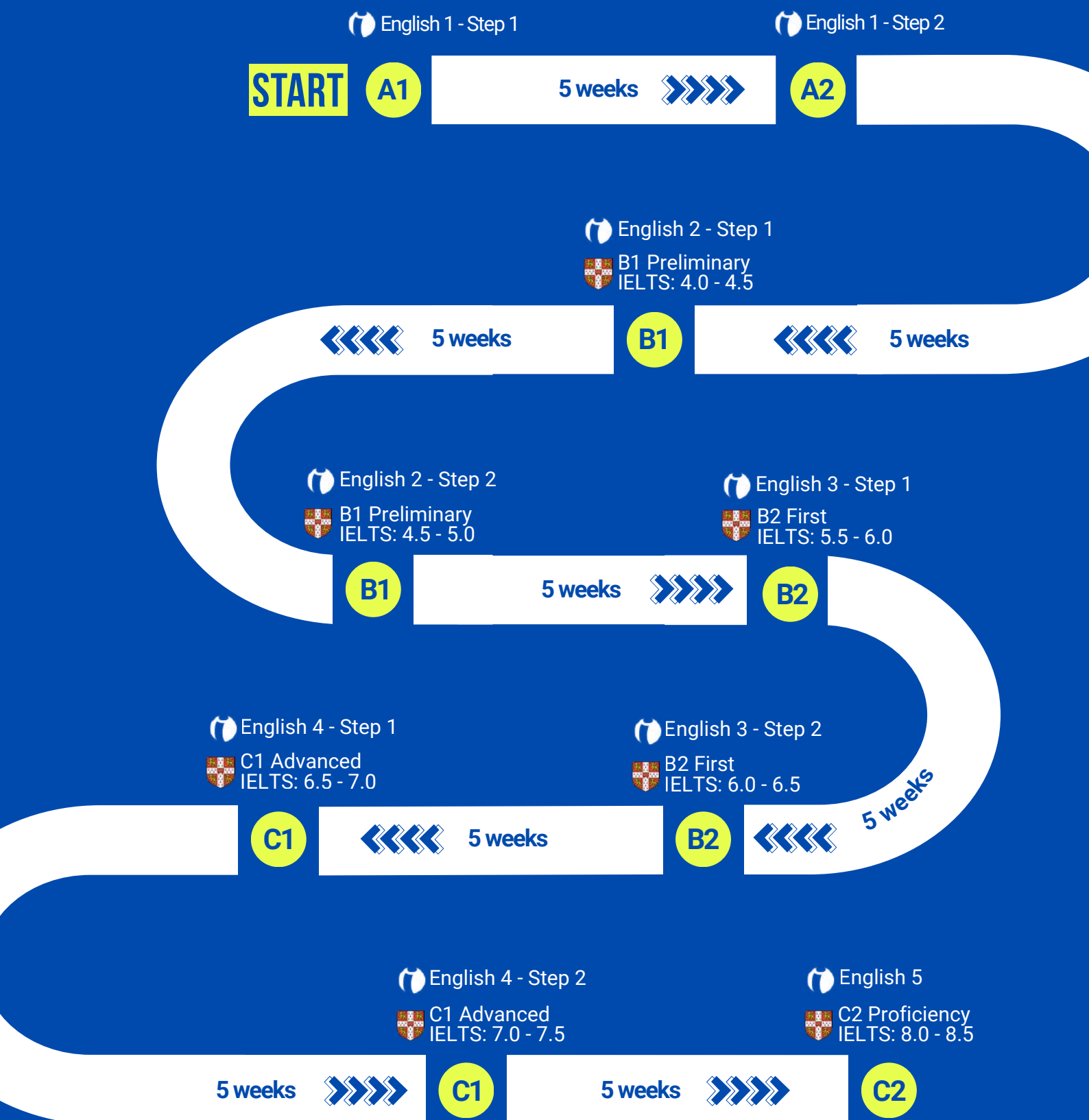


Blended Learning

Blended learning comprises the best of both worlds: in-class and online learning. The blended learning approach can be tailored to create the optimal fit for customers looking for flexibility in their learning.

Your Path to English Success - 30 Weeks

While we acknowledge that the learning process varies for each student, at inlingua Malta, we have established standardised study durations to provide students with an approximate timeframe for progressing from one proficiency level to another. Our General English programme comprises 9 distinctive levels, with each spanning a duration of 5 weeks.



Outline of inlingua Malta levels and their equivalent references: Common European Framework, Cambridge English Scale and IELTS Score and time in number of weeks.

| Inlingua Malta Residences, Sliema and St. Julians

Self-catering budget student accommodation is available in St. Julians, just 20 minutes by bus from the school. These shared apartments feature twin rooms with ceiling fans, a lounge area, and a kitchenette with free Wi-Fi. Alternatively, the Sliema shared apartments are ideal for adult students staying four weeks or longer. They are a few minutes' walk from the school and offer triple and twin rooms with shared kitchen and bathroom facilities. The apartments include a fully equipped kitchen, laundry amenities, pay-per-use air conditioning, free Wi-Fi, TV, and weekly cleaning.

| Staying with a Host Family

Inlingua carefully selects host families for their warm and welcoming atmosphere. By choosing this type of accommodation, you will not only immerse yourself in Maltese customs and traditions but also rapidly improve your English through continuous communication with your host family. This option is safe and secure, especially for young students, and offers the flexibility of staying in either a single or shared room on half-board or full-board options.

| Other Residences

Other student residences are located in the nearby town of Msida, just a 25-minute bus ride from the school. Students can choose from various rooming options, ranging from private rooms to more communal living spaces, including single rooms, twin rooms in clusters, shared apartments, and studio apartments. Accommodation includes weekly bed linen and towel changes, a fully functional kitchen, lounge area, wardrobe, study space, kitchenette, private bathrooms (either en-suite or shared among four people), air conditioning and climate control, 24/7 reception service, laundry facilities, pool access, student and study lounges, and free Wi-Fi.

| Hotels & Hostels

We have partnered with several hotels and hostels in the heart of Sliema, all within walking distance from our school. These partnerships allow us to offer discounted rates, ensuring a comfortable and convenient stay. Whether you prefer the luxury of a hotel or the budget-friendly atmosphere of a hostel, you'll find the perfect place to stay just steps away from your classes. Enjoy the vibrant surroundings of Sliema while focusing on your studies, knowing that your accommodation needs are taken care of by our trusted partners. Book your stay through us and make the most of your time in Malta.

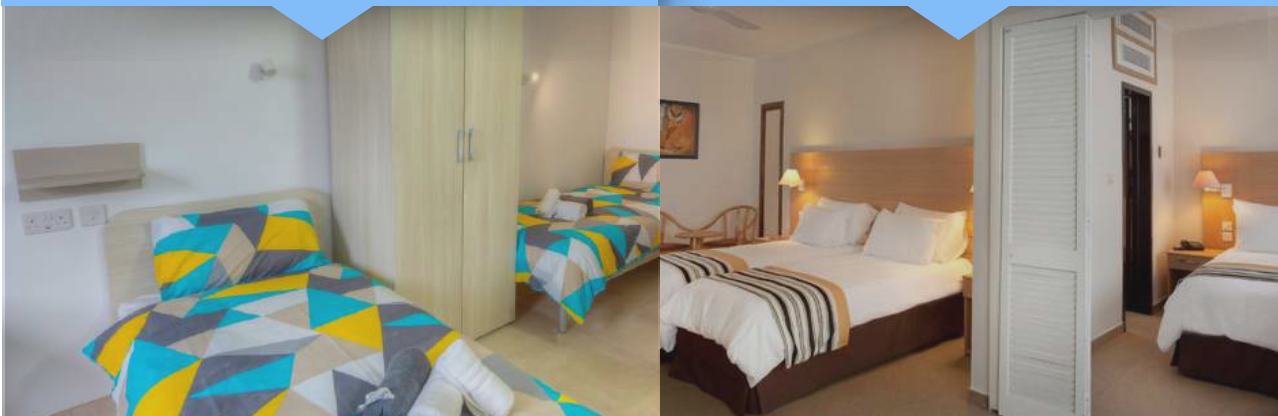


Host
Family



Other
Residences

Hotels & Hostels



Social Activities



Non-Refundable Fees



Registration Fee: €45
Visa Assistance: €45
Student Insurance:
€12.00 per week (Multi-Risk)
€15.00 per week (Multi-Risk & Cancellation)
Morning Only Supplement: €25

What's included



Online Placement test
Certificate upon completion of course
Welcome Pack
Student Discount Card
Online Registration:
www.inlingua-malta.com/registration-form/

Opening Hours



Standard Season and High Season
Monday - Friday 08:30 - 17:00

Required Course Books



Junior English Book: €45
General English Book: €35
Business English Book: €50
Exam Course Book: €50

Information



High Season: 31st May - 30th August 2026
Lessons are held in the mornings and afternoons.
1 Lesson: 45 minutes
Courses Start: Every Monday

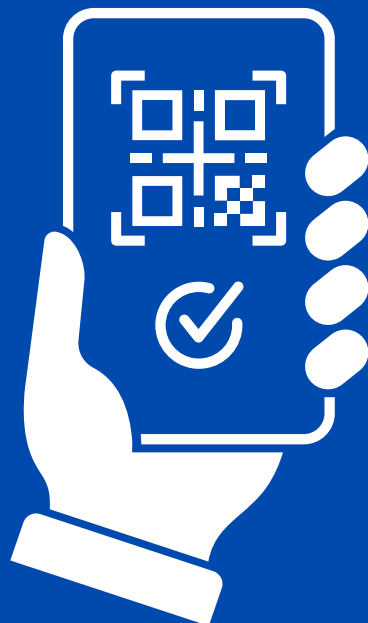
Cambridge Exams 2026



FCE Exam Fee: €220 - 13th March, 9th June, 27th August, 12th December 2026
CAE Exam Fee: €230 - 14th March, 6th June, 28th August, 5th December 2026
CPE Exam Fee: €235 - 7th March, 6th June, 12th December 2026

Scan to

Request a quote



Warm-up Discussion

- 1. What are some safety rules in your school or workplace?
- 2. Can you think of rules at home that you must follow?
- 3. Share one precaution you take when cooking or travelling.



Quality Service



**Cambridge
Authorised Centre**



Family Environment



Ideal Location

Terms & Conditions

Payment Terms

Upon confirmation of booking and receipt of invoice, 25 % deposit must be made by Bank Transfer, Credit Card or Secure Online Payment via Flywire. The remaining balance is to be settled 30 days before arrival date.

BANK DETAILS: Kudos Ltd. Branch: HSBC plc, High Street, Sliema SLM 1549. Malta

IBAN No:

MT08MMEB4406000000006256218001

Swift Code: MMEBMTMT

ONLINE PAYMENT: Pay securely through the link listed at the bottom of your invoice www.inlinguamalta.com/payment-page

Cancellation Fees/Refund Policy

In the event that you cancel your booking, the following refunds will apply:

For cancellations 30 days prior to course or accommodation start date (whichever comes first), inlingua will refund fees received as listed below, less non-refundable charges. (Registration fees - Visa assistance, Medical insurance fees if applicable - Administration charges).

30 days prior to arrival date - Full refund (excluding non-refundable charges/*cancellation fees for accommodation).

14 days prior to arrival date - 50% of invoice (excluding non-refundable charges / *cancellation fees for accommodation).

7 days prior to arrival date and "no shows" - no refund.

Cancellation charges are calculated on invoiced amount and not the deposit received.

Hotel Accommodation - cancellation 1 month prior to arrival - no refund is provided. Changes in Accommodation during the stay are not possible and will not be accepted. Upon quote, Host Family Accommodation will only be made available for the first 48 hours following a request. In cases of illness or holidays planned through the duration of the course, the school needs to be informed. Lessons missed for these reasons will not be replaced or refunded.

Postponements: Course postponements less than 30 days before start of course will be made at a charge of €100.

Accommodation postponements are charged a fee according to the supplier in question.

Double Banking

inlingua Malta reserves the right to adapt a double-banking system whereby students may have a varied timetable in which lessons are delivered either in the morning or in the afternoon.

Third-Party Services

inlingua Malta may arrange or recommend third-party services such as accommodation, airport transfers, insurance, or extracurricular activities. While we work with trusted providers, these services are subject to the third party's terms and conditions.

inlingua Malta acts only as an intermediary and is not liable for any issues, including delays, loss, or injury, arising from third-party services.

Intellectual Property Rights

All educational content provided by inlingua Malta, including lesson materials, online content, handouts, and digital resources, is protected by copyright and remains the intellectual property of inlingua Malta or its licensors. Course materials are provided exclusively for personal, non-commercial use by the enrolled student. They may not be copied, reproduced, distributed, uploaded online, or shared with third parties without prior written consent from inlingua Malta.

Any unauthorised use, duplication, or redistribution of inlingua Malta content is strictly prohibited and may result in disciplinary action or legal proceedings.

Group Bookings

Full payment for group bookings must be received by inlingua Malta before the course start date, following an initial deposit made at the time of booking.

Group leader supervision is available as an additional service at a charge and must be requested in advance; otherwise, it is assumed that the group will provide their own leaders. Lesson times will be established prior to arrival and must be confirmed during the booking process. Please note that Accommodation changes during a group's stay are often not possible and depend on the availability of third-party providers.

Quotations provided are based on group size, and changes would result in a change in price. Payments for accommodation are to be settled upon booking, and no changes are allowed.

Visas

Students travelling on a VISA must plan ahead and collect the necessary information regarding application process. It is recommended that application takes place 12 weeks before arrival.

inlingua Malta will issue a Confirmation Voucher, a ProForma invoice and a Letter of Acceptance for Visa application upon full payment. There is a charge of €45 for Visa assistance. Any additional costs incurred, including application fees and visa center administration fees, are to be borne by the student.

Cancellations after VISA refusal

Any cancellations due to VISA refusals must be made in writing and communicated to info@inlinguamalta.com within three (3) days of receipt of the refusal document sent by the issuing Embassy/Authority.

In the event of a refusal caused by missing or incorrect information provided upon application by the student, no refund will be provided. Full Refund, less non-refundable charges, is provided to students having all the correct documentation submitted, but visa is refused due to diplomatic relations or otherwise.

Visa Granted - Cancellations or Course Shortening

Once a visa has been issued, no refunds will be granted for cancellations, non-arrivals, or absences during the course.

Periods of absence will not be compensated with course extensions.

in cases of visa issuance followed by non-arrival, late arrival, or extended absences, these will be reported to the immigration authorities.

Postponement of courses in the event that, between 7-14 days prior to course start date, the entry visa application approval is still pending, students can opt to postpone their course to a later starting date within the current year against a fee of €145.

In case of visa not being granted after full and correct application, students may opt to file an appeal. inlingua Malta will not be held responsible for any additional charges introduced by the Maltese Government, and these, if any, must be borne by the student.

Take Your Test Online - Before You Arrive

Adult students are to complete the registration process and take the online placement test on www.inlinguamalta.com/registration-form before their arrival.

Failure to do so will mean completing the test on the first day of school, resulting in the possible loss of the first 2 lessons. No refund will be offered for these missed lessons.

Junior students (5 - 12 years old) will not be tested before arrival but will be placed according to their age group, and an appropriate level is discussed with their inlingua teacher on the first day.

Courses Availability and Adjustments

inlingua Malta will make every effort to deliver all reserved courses in full. However, in cases where a course does not meet the minimum number of participants, inlingua Malta reserves the right to offer a suitable alternative of equivalent value or convert the course into one-to-one lessons of corresponding credit.

Please note: Course fees are non-transferable to third parties. Course credit must be used within the same calendar year in which the booking was made.

For exam preparation courses where only one or two students enrol, a reduced-hours policy will apply: the standard 30-lesson course will be adjusted to 20 lessons.

Attendance

In order to receive a certificate of attendance, students must attend a minimum of 80% of lessons scheduled. Students whose attendance falls below this level may be asked to leave the programme. Students travelling on a visa who fall below the required attendance level will be reported to the immigration authorities. Lessons missed due to illness or disrupted travel plans and delays outside of booked course start/end date are not compensated.

Child Supervision/Travelling Unaccompanied Minors

Students booking Junior Courses who are travelling with accompanying adults will be supervised during school hours.

For unaccompanied minors aged 13-17

travelling alone, it is essential to check directly with the airline regarding their unaccompanied minor policy and to pay any applicable unaccompanied minor service fees when booking the flight.

Please note that minors who have not completed the required unaccompanied minor form and paid the relevant airline charges will not be permitted to travel. Proof of payment for the unaccompanied minor service must be provided at the time of booking confirmation. An airport supervision fee of €40 per way will be charged for all unaccompanied minors. This covers the presence of an inlingua Malta representative who will: meet the student upon arrival or assist with check-in for departure, accompany the student at the airport, and remain with the student until they are officially handed over to an airline representative.

Please note: This policy is enforced by many airlines. It is the responsibility of the parent or guardian to ensure all airline requirements are confirmed and complied with before travel.

Eco Contribution Tax

All local and foreign guests aged 18 years or older, staying at any type of accommodation, are required to pay an Environment Contribution tax. This new rate, which applies from 1 July 2026, is that of €1.50 per night up to a maximum of €22.50, for each continuous stay in the Maltese Islands, including Gozo.

This contribution applies to hotels, guesthouses, hostels, self-catering apartments, B&Bs, and host families.

Parent/Guardian Consent Form - Students under 18

It is imperative that the Parent/Guardian Consent Form sent by our Sales Department on application of booking is duly filled and signed by Parent/Guardian. inlingua Malta cannot take responsibility regarding the well-being of students under 18 travelling unaccompanied without the relevant form in hand.

Customer Care & Student Assistance

The inlingua Malta team is freely available to assist students and deal with all circumstances during their stay. Feedback forms are available at reception. If at any time a student is unhappy with any aspect of their course, accommodation or leisure activities, they may opt to bring this to our attention either verbally or in writing. inlingua Malta will not accept any complaints after a student's stay in Malta has ended.

Code of Conduct

Dismissal Policy: inlingua Malta expects that all students are well-motivated, polite and considerate towards members of staff, host-families and fellow students at all times. inlingua reserves the right to exclude/expel a student from a programme/course in the event of misconduct within the school/place of accommodation/elsewhere. Stipulated curfew imposed on students living within a host family must be adhered to. Failure to abide by local laws and regulations could also result in expulsion. In the case of expulsion,

no refunds will be given. Should a student be sent back home, extra travelling costs are borne by the student.

Privacy & Data Protection (GDPR Compliance)

inlingua Malta is committed to protecting your personal data in accordance with the General Data Protection Regulation (GDPR) and relevant Maltese laws. By enrolling with inlingua Malta, you consent to the collection, processing, and use of your personal information for the purposes of course registration, visa processing (if applicable), accommodation arrangements, health and safety compliance, and ongoing school administration.

We only collect information necessary to deliver our services effectively and lawfully. This may include full name, contact details, nationality, date of birth, passport details, and health or emergency contact information.

Your data may be shared with third parties only when required to deliver services (e.g. accommodation providers, insurance companies, visa authorities) and under strict confidentiality agreements.

You have the right to access, correct, or request deletion of your personal data at any time by contacting our administration team at info@inlinguamalta.com. Data is stored securely and retained only for the period required by law or our administrative obligations.

Host Families Arrivals /Departures

Students lodged at Host Family should arrive at the Host Family between 11:00 and 23:00 and depart before 15:00. Students staying at a host family should make sure that their luggage and personal belongings are packed and their room is vacated if their departure time is after 15:00. Should students want to benefit from facilities or meal plans outside the suggested arrivals and departures times this should be agreed upon on confirmation of flight details and extra nights will be charged accordingly.

Host Family Curfew Times

Students staying with a Host Family are asked to respect curfew times. Students between the ages of 13 and 15 are to be home at 22:00. Students between 16 and 17 should be home before 00:00.

Transfers

In order for inlingua to provide an efficient airport transfer service, all flight details must be received in full (i.e. Flight number, Arrival and Departure time, Airline and point of origin) no later than 7 days prior to arrival. If not provided 7 days prior to arrival, students will not be entitled to a refund in the case of missed transfers. Airport transfer fees include a maximum of 1 hour waiting time. In the event of a flight delay exceeding 1 hour, students will be charged an additional €15 per hour pro rata on their first day at school.

Photography, Filming & Sound Recording

During the course of a student's stay, the School may arrange to record, photograph or shoot video footage for its promotional

purposes only, both printed and online. Any student who does not wish to participate should express this and indicate at the time of recording, photographing or video shooting the wish not to participate.

Public Holidays

1st January, 10th February, 19th March, 31st March, 3rd April, 1st May, 7th June, 29th June, 15th August, 8th September, 21st September, 8th December, 13th December, 25th December. Some, and not all, of the lessons that fall on public holidays during weekdays will be made up during the rest of the week.

Insurance/Liability

Students must have adequate health, accident and travel insurance while attending any of our programmes. It is recommended that all personal belongings such as cameras, digital products, laptops and other valuables are insured prior to arrival. This should be obtained from your country of residence or through our sales team.

inlingua Malta will not be held liable for loss, damage or injury to persons or property. Student insurance, compulsory for students below the age of 18, can be purchased from inlingua Malta prior to arrival. We recommend that students prepare a photocopy of their passport or ID card prior to their arrival in Malta.

Leisure Programme

inlingua Malta reserves the right to make changes to the leisure programme due to weather conditions or any other reasons beyond our control. No refunds or changes can be made on prepaid activities included in our programmes.

Long Stay Packages

Students booking courses of a duration of 8 weeks or more are not entitled to a refund or course credit in case of them cancelling their course, accommodation or any other ancillary service during their stay. Long-stay students who are NOT travelling on a VISA may opt to take a total of 1 week holiday per 8-week course stay, which may be extended to accommodate the full course weeks. Any additional holiday weeks added are automatically lost and are not refundable. In order to avail of this service, the student must first inform the sales or academic department. In such cases, inlingua does not guarantee continuity in course syllabus.

Force Majeure

inlingua Malta will not be responsible for any failure to comply with any of its obligations (and therefore shall not be required to provide any compensation) if the failure is occasioned by any cause beyond inlingua's reasonable control; nor shall inlingua be held responsible for any costs incurred by or on behalf of the student as a result of any such cause. Such causes shall include but shall not be limited to war, threat of war, riot, civil strife, industrial dispute, terrorist activity, natural or nuclear disaster and unusually adverse weather conditions.

PAYMENT DETAILS

Kudos Ltd

Branch: HSBC p.l.c. High Street, Sliema SLM 1549, Malta

IBAN No: MT08 MMEB 4406 0000 0000 0625 6218 001

Account Number: 006 256218 001

Swift Code: MMEBMTMT

Sort Code: 44060

CONTACT DETAILS

inlingua School of Languages

Address: 92, Tigne Towers, Tigne Street, Sliema, Malta

VAT Registration No: MT 2573-0022

Website: www.inlinguamalta.com

E-mail: info@inlinguamalta.com

Tel: +356 2010 2000

inlingua Malta
92, Tigne Towers
Tigne Street
Sliema SLM 3172
Malta

T +356 2010 2000
info@inlinguamalta.com
www.inlinguamalta.com



Authorised Exam Centre